

Shockey Monkey



Monkey Remote

(Installation & Deployment)


Version: BETA 1.0

Download & Provisioning

1. Visit the following URL.
(<http://YourPortalAddress/list.asp?item=wmiagent>)
2. Click [Generate Installer]

Main Overview

Machine Status Overview



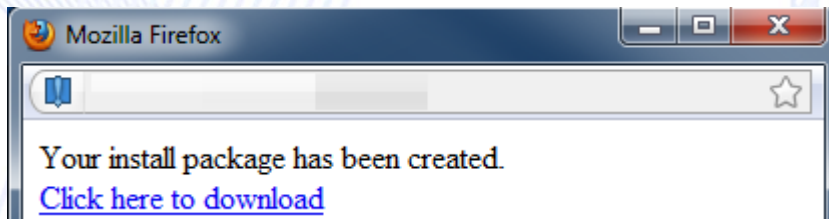
Recent System Warning

Event Log

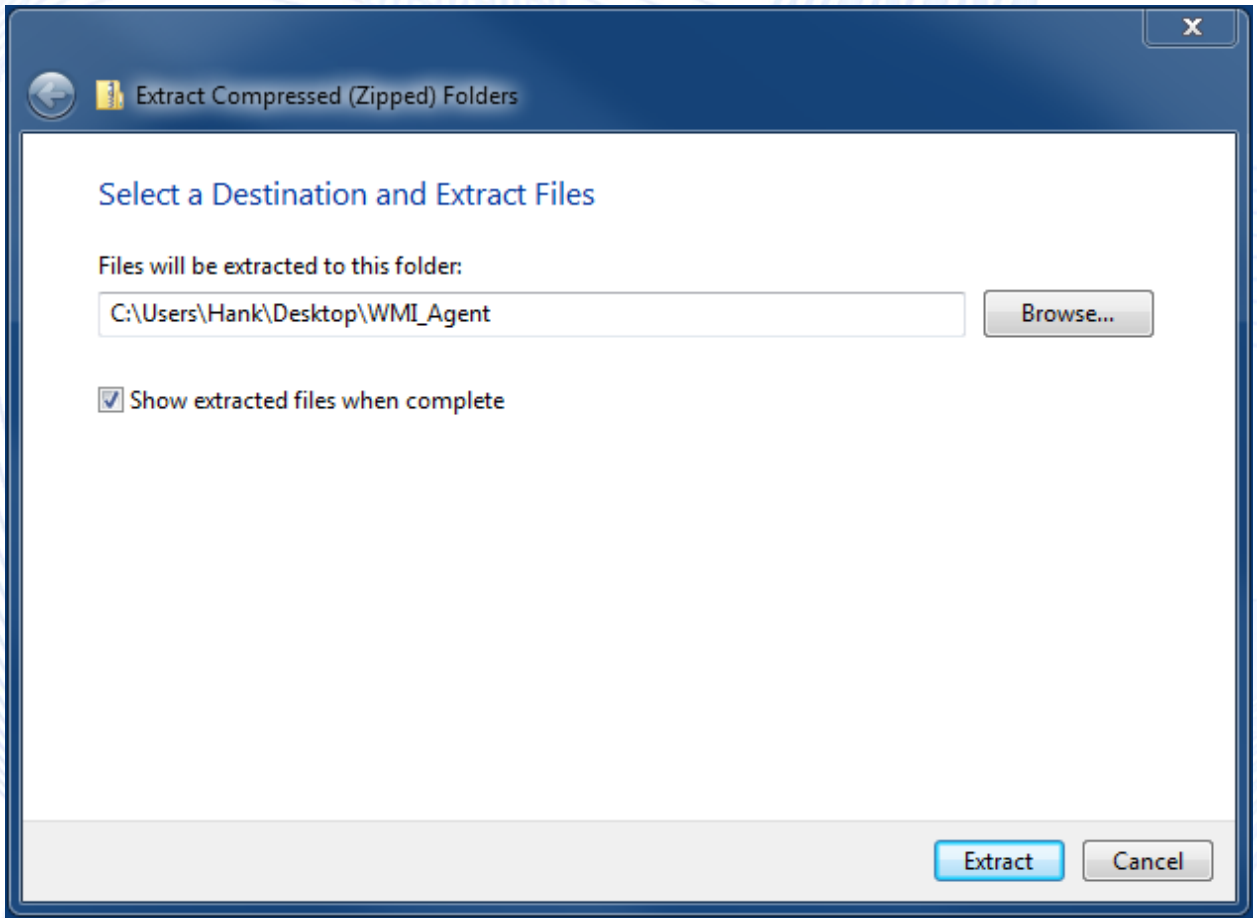
Source	Message	Time
EventLog HANK-NEWMAN	The previous system shutdown at 15624 PM on 1232010 was unexpected.	Dec 3rd, 2010 1:58 pm
DCOM HANK-NEWMAN	The description for Event ID -1073731814 in Source DCOM cannot be found. The local computer may not have the necessary registry information or message DLL files to display the message or you may not	Dec 3rd, 2010 1:08 pm
Service Control Manager HANK-NEWMAN	The Monkey Connect service terminated unexpectedly. It has done this 1 time(s).	Dec 3rd, 2010 1:02 pm

Version: 1.0
Generate Installer

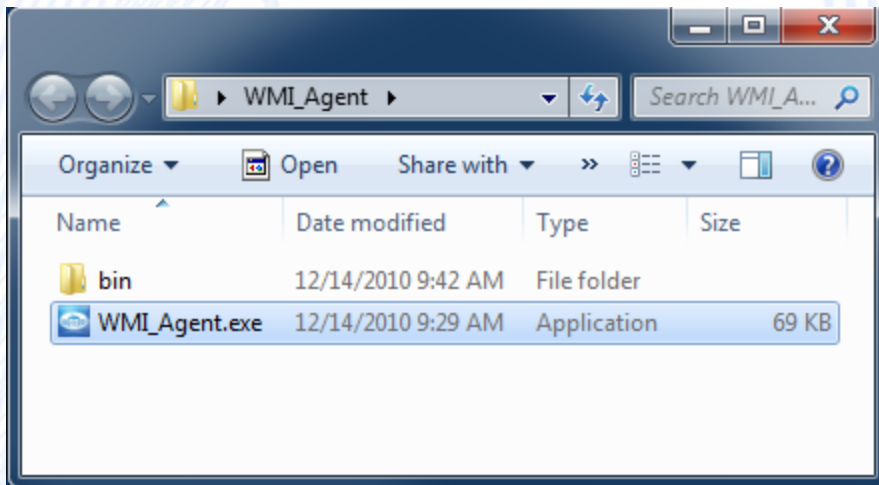
3. A new window will open; make sure the pop-up is not blocked.



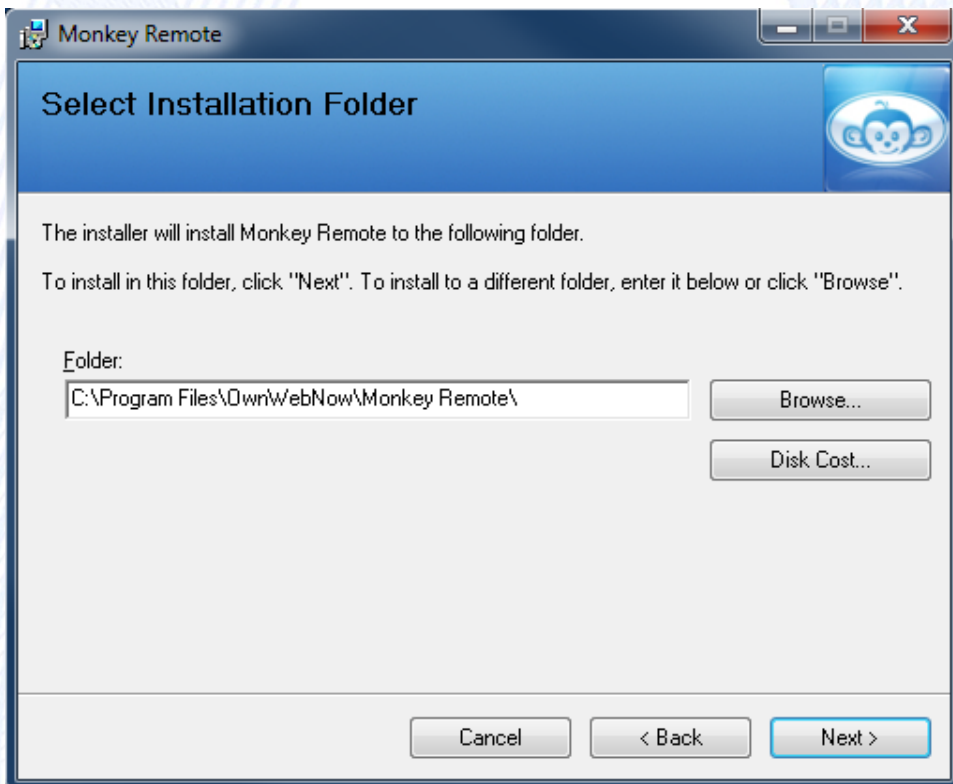
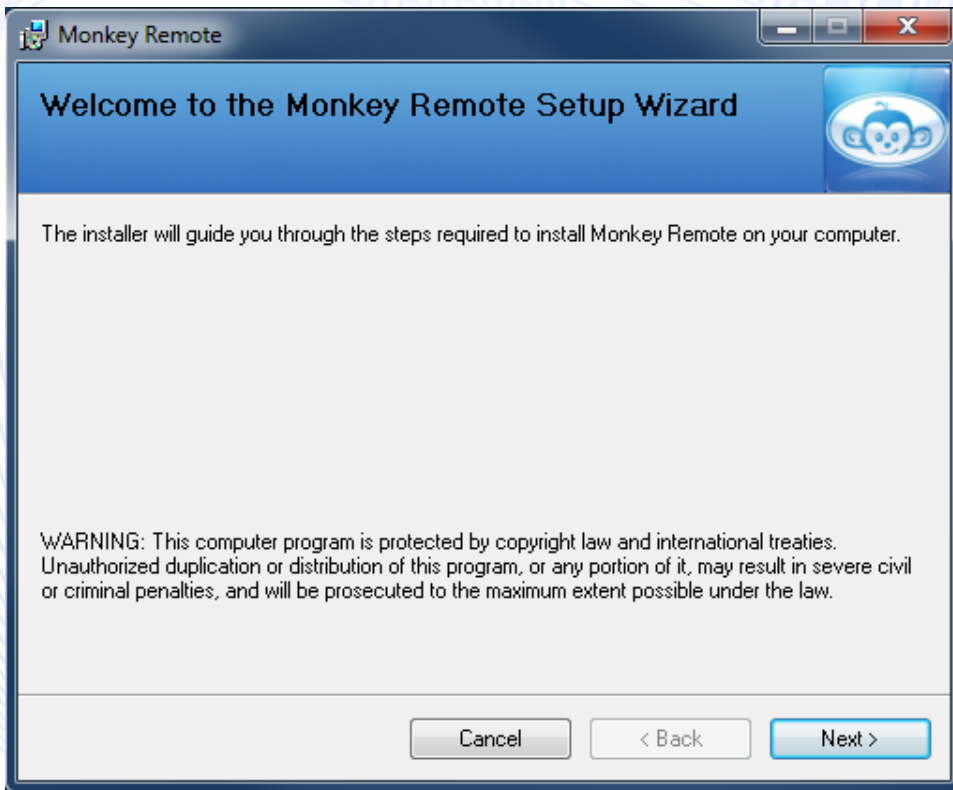
4. Extract the contents of the Archive.

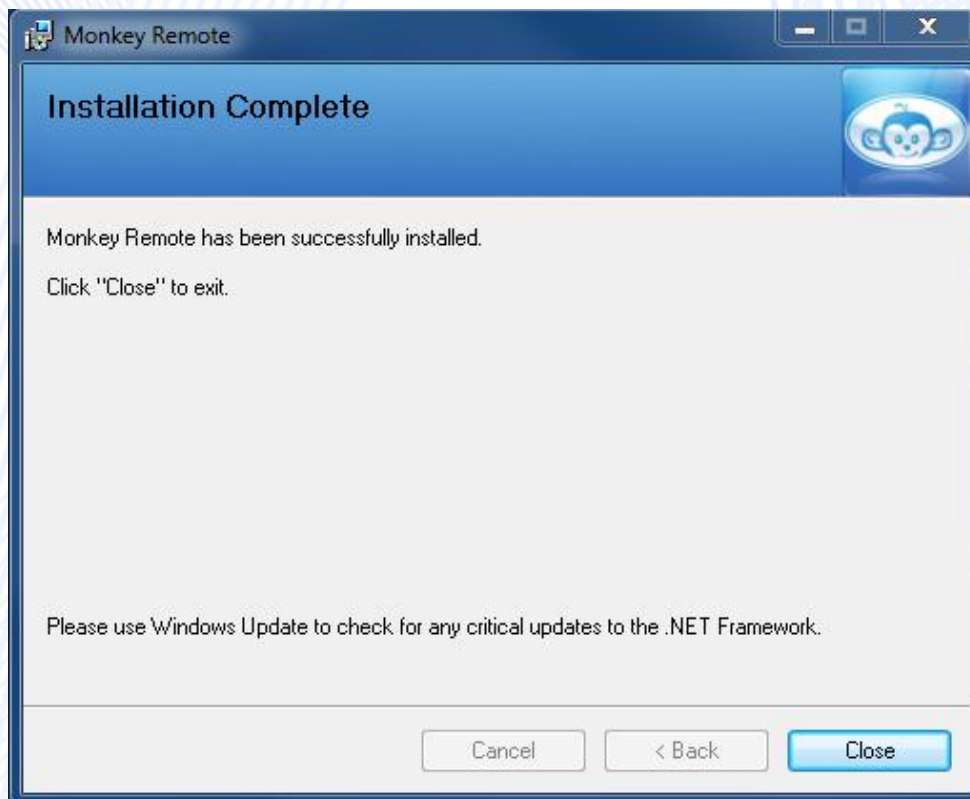
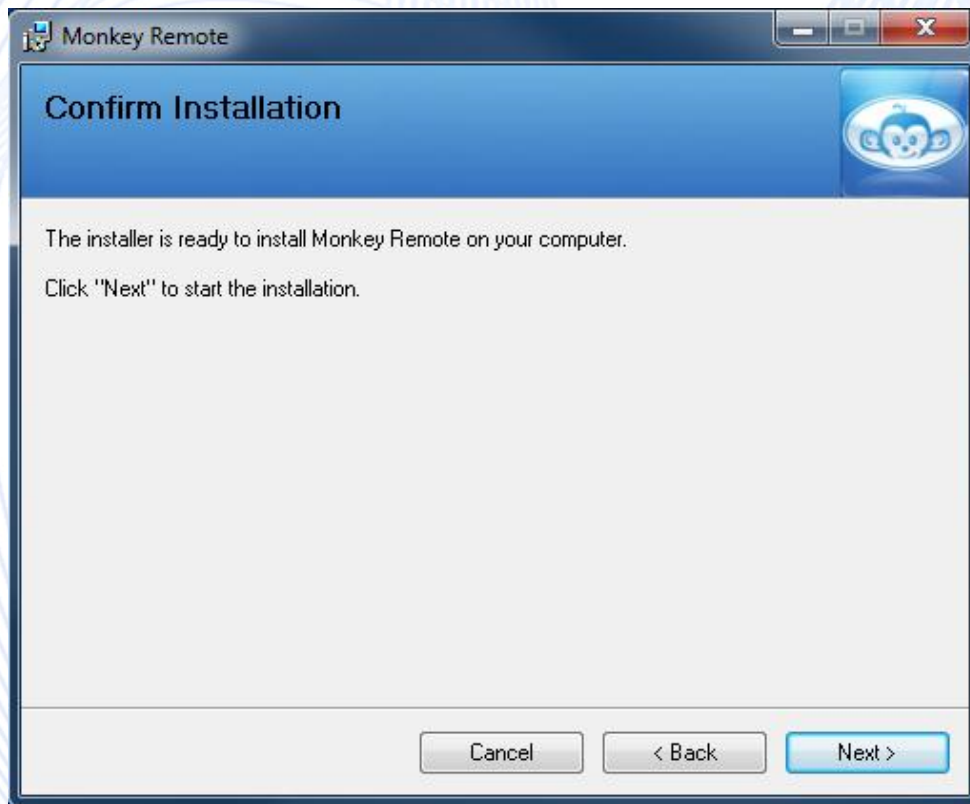


5. Launch **WMI_Agent.exe**



- Install Monkey Remote (*Nothing special here, just complete the installer.*)





7. Once the installation is complete you will notice a new Icon on your Desktop. This icon is simply a failsafe in the event “Monkey Remote” crashes. If everything is running without issues, double clicking this icon will do nothing.



8. That's it, your installation is complete. Within 1-5 minutes, you will notice the information begin to populate inside of your Shockey Monkey portal. New information will be gathered on an hourly basis from each of the remote machines.